



2215/902 Bokarina Boulevard Bokarina QLD

1  1  1 

Welcome to Bask Caretta Bokarina Apartments, where modern luxury meets coastal serenity. These stunning 1-bedroom, 1-bathroom units, priced from \$669,000 to \$689,000, offer the ultimate beachside living experience. Each apartment is thoughtfully designed with a spacious living area, a modern kitchen equipped with high-end appliances, and a private balcony to enjoy the gentle sea breeze and picturesque views. The interiors feature premium finishes, including stone benchtops, contemporary cabinetry, and stylish fixtures that exemplify elegance and functionality.

Residents of Bask Caretta Bokarina will appreciate the wide range of amenities designed for comfort and leisure. The Level 1 heated pool, complete with a kids' shallow area, provides a perfect spot for relaxation and fun. Multiple recreational areas offer spaces for social gatherings and

Price : From \$669,000

View : <https://www.bluewaveproperty.com.au/8056797>



Chris Pullen
07 5400 2549



IMPORTANT LEGAL DISCLAIMER. PLEASE READ CAREFULLY

Illustrative only. Dimensions, design features, floor areas, specifications and room configurations subject to change without notice. Any furniture shown is not included. Development is not completed and so the final product may differ from that depicted in this floorplan. Buyers should refer to and rely on the Identification Plan included in the Sales and Purchase Documents. Subject to Variations in accordance with Contract Terms.

TYPE H1

UNIT 2109

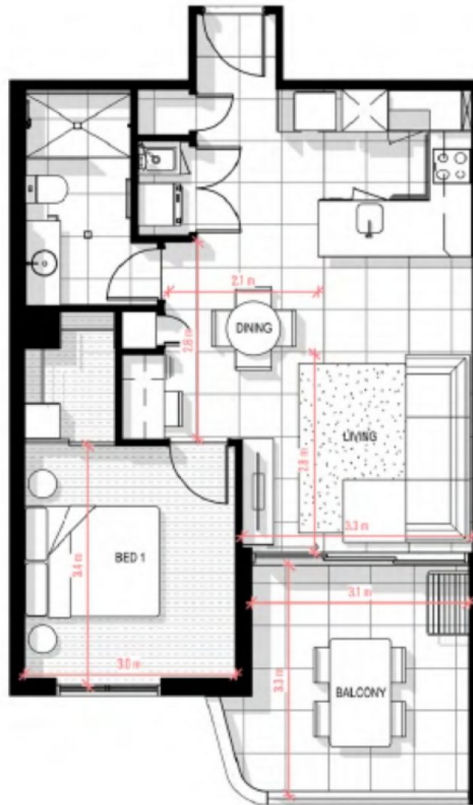
1 BED | 1 BATH | 1 CAR

BED 1 - 3.2m x 3.1m
 LIVING - 3.0m x 3.3m
 DINING - 3.6m x 2.4m
 BALCONY - 4.5m x 2.6m



Areas to be confirmed by surveyor

TOTAL AREA - 69m²
INTERNAL AREA - 53m²
EXTERNAL AREA - 16m²



IMPORTANT LEGAL DISCLAIMER. PLEASE READ CAREFULLY

only. Dimensions, design features, floor areas, specifications and room configurations subject to change without notice. Any furniture shown is not in final form. The unit is not completed and so the final product may differ from that depicted in this floorplan. Buyers should refer to and rely on the Identification Plan in the Contract Documents. Subject to Variations in accordance with Contract Terms.

TYPE H2-3

UNIT 2310

1 BED | 1 BATH | 1 CAR

BED 1 - 3.0m x 3.4m

LIVING - 3.2m x 2.8m

DINING - 2.0m x 2.8m

BALCONY - 3.1m x 3.3m



Areas to be confirmed by surveyor

TOTAL AREA - 63m²

INTERNAL AREA - 52m²

EXTERNAL AREA - 11m²