






3/1 Harry Place Beerwah QLD

3  2  2 

Welcome to 3/1 Harry Place, Beerwah, a beautifully crafted townhouse just a year and a half old, offering 197 square meters of modern living space. This near-new three-bedroom property seamlessly blends style and functionality, featuring an open-plan design with a stunning stone kitchen as its centrepiece of the kitchen.

The home is designed for comfort and versatility, with two spacious living areas that are perfect for family life or entertaining.

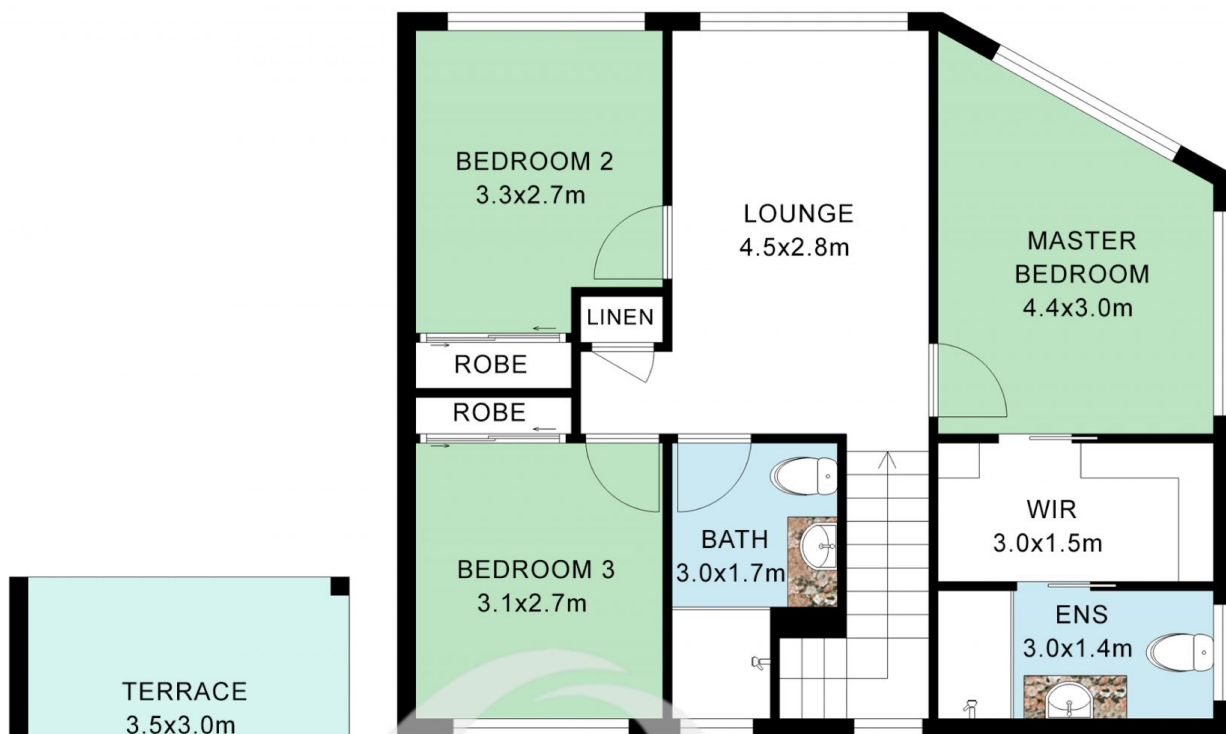
The three generously sized bedrooms ensure everyone has their own space. A single lock-up garage plus an additional carport provide ample parking and storage options.

[For full version visit the website](https://www.bluewaveproperty.com.au)

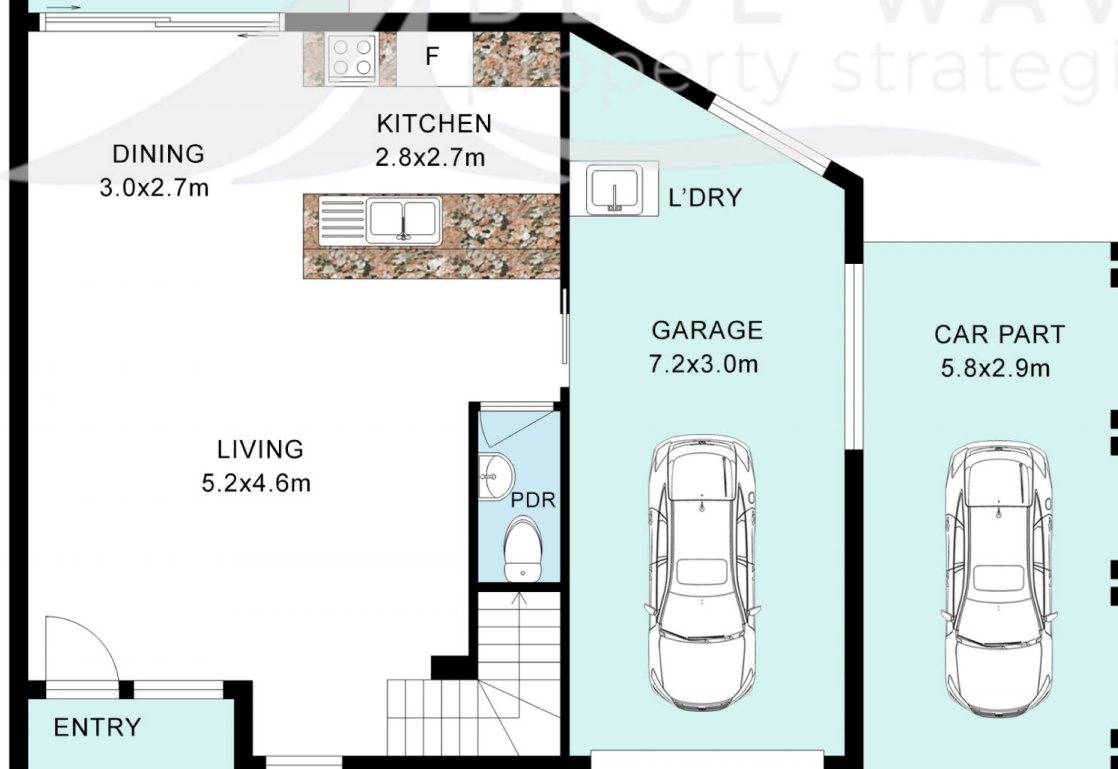
Type : House
Price : Offers Over \$670,000
Building Size : 156 sqm
Land Size : 142 sqm
View : <https://www.bluewaveproperty.com.au/8103445>



Chris Pullen
07 5400 2549



FIRST FLOOR



GROUND FLOOR



While every attempt has been made to ensure accuracy of this floor plan's area and measurements of doors, windows, rooms and all other items are approximate and no responsibility is taken for any error, omission, or mis-statement. This plan is for illustrative purposes only and should only be used as such by any prospective purchaser. Floor plan by MAV MEDIA www.mavmedia.au



INTERNAL	:107 m2
GARAGE	:20 m2
U/C ENTRY/	
TERRACE	:12 m2
CAR PART	:17 m2
TOTAL	:156 m2

3/1 Harry Place, Beerwah