



9-11 Nelson Avenue Gold Coast QLD

4  3  2 

Welcome to Hope Island Residences, offering eight exclusive terrace homes that combine luxury, tranquillity, and convenience on Queensland's Gold Coast. Perfect for both homeowners and investors, these homes provide sophisticated design, modern amenities, and a premium coastal lifestyle.

Prime Location: Hope Island, Gold Coast

Hope Island is a vibrant community known for its natural beauty and easy access to beaches, fine dining, boutique shopping, and world-class golf courses. Located near Sanctuary Cove, it's ideal for those seeking both relaxation and adventure.

Property Highlights

[For full version visit the website](https://www.bluewaveproperty.com.au/8179612)

Type : Apartment
Price : Prices from 1,026,000
Building Size : 45 sqm
Land Size : 201 sqm
View : <https://www.bluewaveproperty.com.au/8179612>

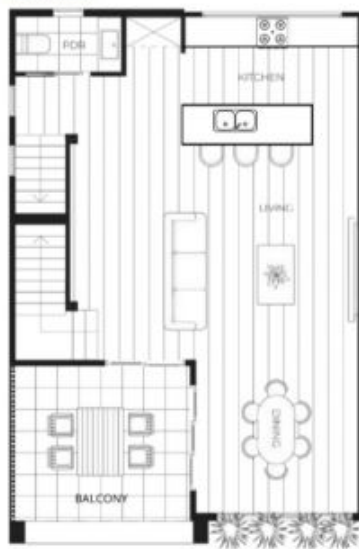


Chris Pullen
07 5400 2549

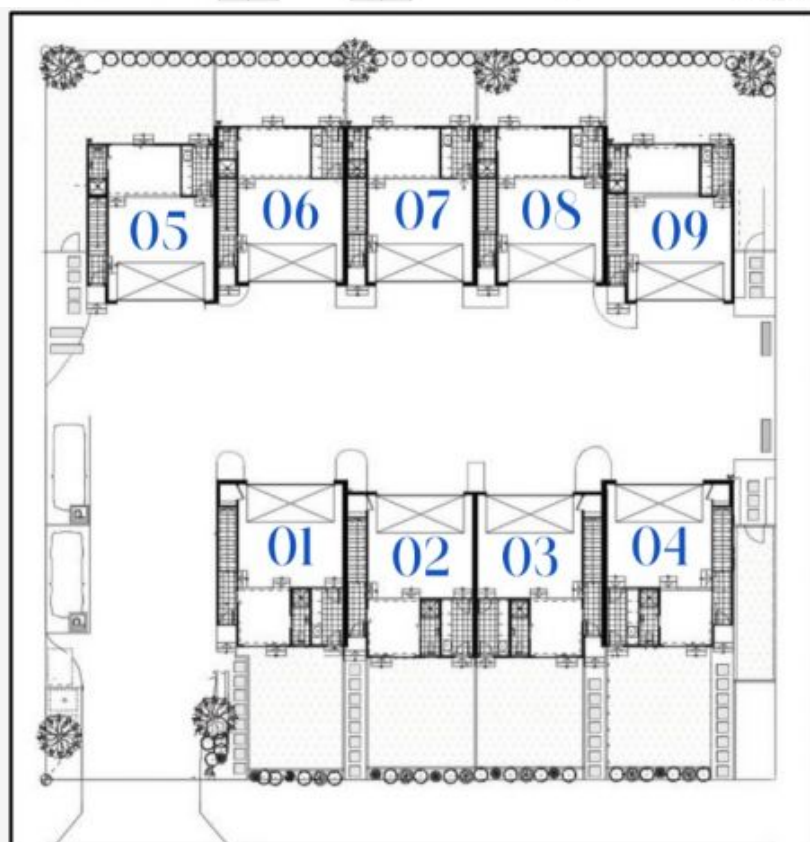
GROUND FLOOR



FIRST FLOOR



SECOND FLOOR



TERRACE HOMES.

| m ² | INTERNAL (inc. balcony) | EXTERNAL (exclusive use) | TOTAL (approx.) |
|----------------|----------------------------|-----------------------------|--------------------|
| TERRACE 01 | 200 | 49 | 249 |
| TERRACE 02 | 201 | 45 | 246 |
| TERRACE 03 | 201 | 44 | 245 |
| TERRACE 04 | 200 | 74 | 274 |
| TERRACE 05 | 196 | 67 | 263 |
| TERRACE 06 | 199 | 29 | 228 |
| TERRACE 07 | 199 | 29 | 228 |
| TERRACE 08 | 199 | 29 | 228 |
| TERRACE 09 | 197 | 67 | 264 |